



ANTI-VIBRATION MOUNTS

| | |
|--|--------------|
| Male/Male Thread Anti-Vibration Mount..... | 21-1 |
| Male/Female Thread Anti-Vibration Mount..... | 21-2 |
| Female/Female Thread Anti-Vibration Mount..... | 21-3 |
| Rubber Stops..... | 21-4 to 21-5 |
| Rubber Buffer/Bobbin Mounts..... | 21-6 |
| Bolt Down Anti-Vibration Mounts..... | 21-7 to 21-8 |
| Anti-Vibration Levelling Feet..... | 21-9 |

WDS 710

Male/Male Thread Mount

MATERIAL -

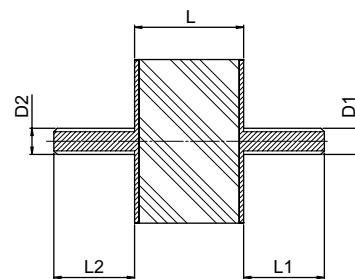
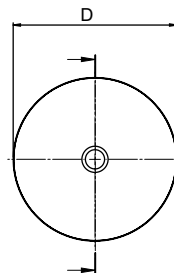
Thread & Plate Material: BZP Steel


Shock Absorbing Rubber:

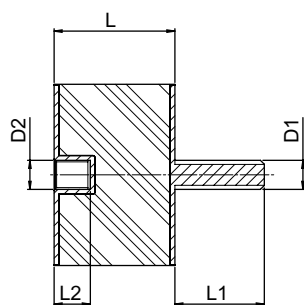
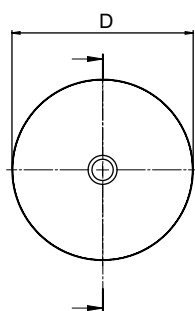
Natural Rubber, Black

Hardness: 55 Shore A

ZP

Temperature Range
-30°C to + 80°C

| D | L | D1 | L1 | D2 | L2 | Max Compressive Load (kg) | Deflection @ Max Compressive Load (mm) | Max Shear Load (kg) | Deflection @ Max Shear Load (mm) |  (g) | WDS No. |
|----|----|-----|----|-----|----|---------------------------|--|---------------------|----------------------------------|---|------------|
| 8 | 8 | M3 | 8 | M3 | 8 | 3.8 | 0.9 | 1.4 | 1.8 | 5 | 710-080855 |
| 10 | 10 | M4 | 8 | M4 | 8 | 12 | 1 | 1.4 | 1.9 | 5 | 710-101055 |
| 10 | 15 | M4 | 8 | M4 | 8 | 13 | 1.4 | 2.2 | 3.7 | 5 | 710-101555 |
| 13 | 13 | M4 | 8 | M4 | 8 | 4.5 | 1.3 | 1.9 | 3.1 | 5 | 710-131355 |
| 15 | 8 | M4 | 8 | M4 | 8 | 14.9 | 1.5 | 2.3 | 3.8 | 6 | 710-150855 |
| 15 | 10 | M4 | 8 | M4 | 8 | 10 | 1.7 | 4.5 | 3.5 | 5 | 710-151055 |
| 15 | 15 | M4 | 8 | M4 | 8 | 11 | 1.8 | 4.9 | 3.6 | 5 | 710-151555 |
| 20 | 8 | M6 | 18 | M6 | 18 | 15.5 | 1.6 | 4.5 | 3.7 | 15 | 710-200855 |
| 20 | 10 | M6 | 18 | M6 | 18 | 17.3 | 1.6 | 5.5 | 3.5 | 16 | 710-201055 |
| 20 | 15 | M6 | 18 | M6 | 18 | 22.5 | 1.7 | 7.9 | 33 | 15 | 710-201555 |
| 20 | 20 | M6 | 18 | M6 | 18 | 20.4 | 2.4 | 8.2 | 4.8 | 20 | 710-202055 |
| 20 | 25 | M6 | 18 | M6 | 18 | 24 | 2 | 9.8 | 5.2 | 25 | 710-202555 |
| 25 | 15 | M6 | 18 | M6 | 18 | 35 | 2.3 | 13.2 | 4.2 | 20 | 710-251555 |
| 25 | 20 | M6 | 18 | M6 | 18 | 33.9 | 2.4 | 13.7 | 4.8 | 30 | 710-252055 |
| 25 | 25 | M6 | 18 | M6 | 18 | 31 | 3.2 | 13.5 | 6.3 | 35 | 710-252555 |
| 25 | 30 | M6 | 18 | M6 | 18 | 34 | 3 | 13.7 | 4.8 | 40 | 710-253055 |
| 30 | 15 | M8 | 23 | M8 | 23 | 55 | 1.7 | 19.5 | 3.3 | 50 | 710-301555 |
| 30 | 20 | M8 | 23 | M8 | 23 | 50 | 2.4 | 19.5 | 4.8 | 50 | 710-302055 |
| 30 | 25 | M8 | 23 | M8 | 23 | 44.6 | 3.2 | 19.5 | 6.3 | 55 | 710-302555 |
| 30 | 30 | M8 | 23 | M8 | 23 | 42.8 | 3.9 | 19.5 | 7.8 | 60 | 710-303055 |
| 30 | 40 | M8 | 23 | M8 | 23 | 41 | 4.2 | 19.5 | 7.5 | 68 | 710-304055 |
| 40 | 20 | M8 | 23 | M8 | 23 | 84 | 2.4 | 35 | 4.8 | 80 | 710-402055 |
| 40 | 30 | M8 | 23 | M8 | 23 | 76 | 3.9 | 35 | 7.8 | 95 | 710-403055 |
| 40 | 40 | M8 | 23 | M8 | 23 | 75.2 | 5.4 | 35.1 | 10.8 | 110 | 710-404055 |
| 50 | 20 | M10 | 27 | M10 | 27 | 168 | 3.2 | 53 | 7.8 | 156 | 710-502055 |
| 50 | 30 | M10 | 28 | M10 | 28 | 156 | 3.9 | 54 | 7.8 | 170 | 710-503055 |
| 50 | 40 | M10 | 28 | M10 | 28 | 145 | 5.4 | 54.2 | 10.8 | 215 | 710-504055 |
| 50 | 50 | M10 | 28 | M10 | 28 | 124 | 6.9 | 54.2 | 10.8 | 240 | 710-505055 |
| 60 | 40 | M10 | 28 | M10 | 28 | 176 | 5.4 | 54.2 | 10.8 | 210 | 710-604055 |
| 75 | 50 | M12 | 37 | M12 | 37 | 341 | 6.5 | 122 | 13.2 | 485 | 710-755055 |




WDS 711

Male/Female Thread Mount

MATERIAL -
Thread & Plate Material: BZP Steel
Shock Absorbing Rubber: Natural Rubber, Black
Hardness: 55 Shore A



Temperature Range
-30°C to + 80°C

| D | L | D1 | L1 | D2 | L2 | Max Compressive Load (kg) | Deflection @ Max Compressive Load (mm) | Max Shear Load (kg) | Deflection @ Max Shear Load (mm) |  (g) | WDS No. |
|----|----|-----|----|-----|----|---------------------------|--|---------------------|----------------------------------|---|------------|
| 8 | 8 | M3 | 8 | M3 | 4 | 3.6 | 0.9 | 1.4 | 1.8 | 1 | 711-080855 |
| 10 | 10 | M4 | 8 | M4 | 4 | 4 | 1 | 1.4 | 1.9 | 3 | 711-101055 |
| 10 | 15 | M4 | 8 | M4 | 4 | 4.5 | 0.9 | 1.4 | 1.8 | 3 | 711-101555 |
| 13 | 13 | M4 | 8 | M4 | 4 | 4.5 | 1.3 | 1.9 | 3.1 | 5 | 711-131355 |
| 15 | 10 | M4 | 8 | M4 | 4 | 10 | 1.7 | 4.5 | 4.5 | 6 | 711-151055 |
| 15 | 15 | M4 | 8 | M4 | 4 | 23.6 | 1.8 | 8.3 | 3.6 | 10 | 711-151555 |
| 20 | 15 | M6 | 18 | M6 | 6 | 25.9 | 1.7 | 9.0 | 3.3 | 15 | 711-201555 |
| 20 | 20 | M6 | 18 | M6 | 6 | 20.4 | 2.4 | 8.2 | 4.8 | 20 | 711-202055 |
| 20 | 25 | M6 | 18 | M6 | 6 | 24 | 2 | 9.8 | 5.2 | 22 | 711-202555 |
| 25 | 15 | M6 | 18 | M6 | 6 | 35 | 2.3 | 13.2 | 4.2 | 25 | 711-251555 |
| 25 | 20 | M6 | 18 | M6 | 6 | 35.6 | 2.4 | 15.8 | 4.8 | 30 | 711-252055 |
| 25 | 25 | M6 | 18 | M6 | 6 | 32.6 | 3.2 | 14.2 | 6.3 | 35 | 711-252555 |
| 25 | 30 | M6 | 18 | M6 | 6 | 34 | 3 | 13.7 | 4.8 | 34 | 711-253055 |
| 30 | 15 | M8 | 23 | M8 | 8 | 82.6 | 1.7 | 10.6 | 3.3 | 38 | 711-301555 |
| 30 | 20 | M8 | 23 | M8 | 8 | 57.5 | 2.4 | 22.4 | 4.8 | 50 | 711-302055 |
| 30 | 25 | M8 | 23 | M8 | 8 | 43.7 | 3.2 | 19 | 6.3 | 47 | 711-302555 |
| 30 | 30 | M8 | 23 | M8 | 8 | 42.8 | 3.9 | 19.5 | 7.8 | 35 | 711-303055 |
| 30 | 40 | M8 | 23 | M8 | 8 | 41.5 | 4.5 | 20 | 8.9 | 60 | 711-304055 |
| 40 | 20 | M8 | 23 | M8 | 8 | 88.2 | 2.4 | 36.7 | 4.8 | 75 | 711-402055 |
| 40 | 30 | M8 | 23 | M8 | 8 | 79.8 | 3.9 | 36.7 | 7.8 | 90 | 711-403055 |
| 40 | 40 | M8 | 23 | M8 | 8 | 82.7 | 5.4 | 38.6 | 10.8 | 105 | 711-404055 |
| 50 | 20 | M10 | 26 | M10 | 11 | 103 | 5.5 | 42 | 8.5 | 150 | 711-502055 |
| 50 | 40 | M10 | 26 | M10 | 11 | 115 | 6.2 | 49 | 9.5 | 172 | 711-504055 |
| 50 | 50 | M10 | 26 | M10 | 12 | 124 | 6.9 | 54.2 | 10.8 | 230 | 711-505055 |
| 60 | 40 | M10 | 28 | M10 | 12 | 194 | 5.4 | 59.6 | 10.8 | 265 | 711-604055 |
| 75 | 50 | M12 | 37 | M12 | 15 | 341 | 6.5 | 122 | 13.2 | 475 | 711-755055 |



GAS STRUTS & END FITTINGS

Available in Carbon Steel & Stainless Steel with DIN Standard End Fittings

Call 0845 606 66 77 or visit
www.wdsltd.co.uk and order yours TODAY!

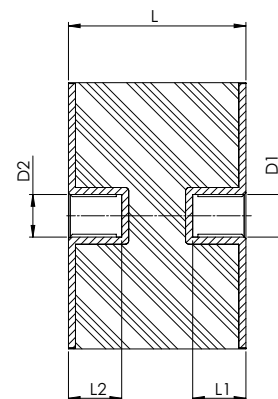
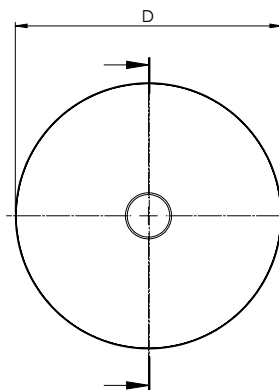
WDS 712


Female/Female Thread Mount

MATERIAL -
Thread & Plate Material: BZP
Steel
Shock Absorbing Rubber:
Natural Rubber, Black
Hardness: 55 Shore A

ZP

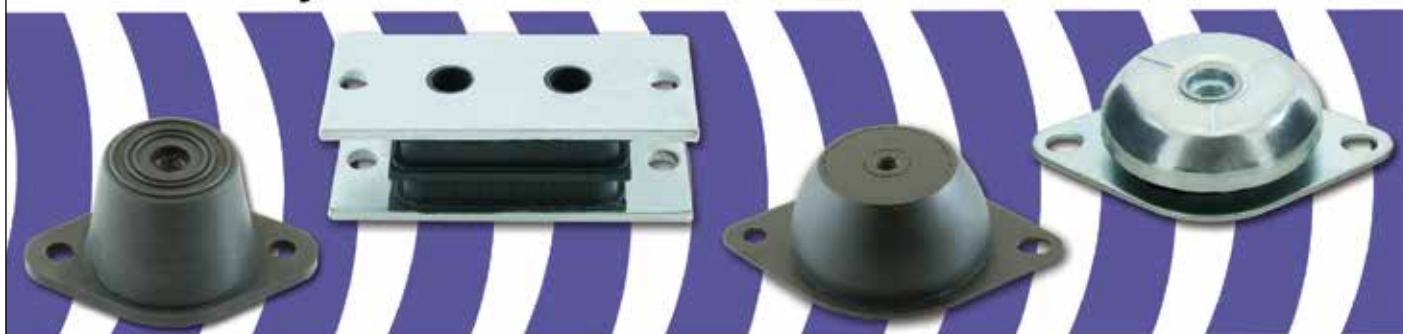
Temperature Range
-30°C to + 80°C

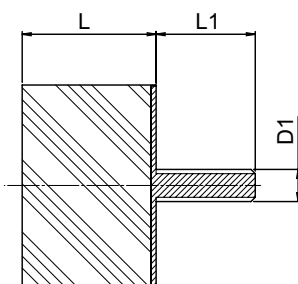
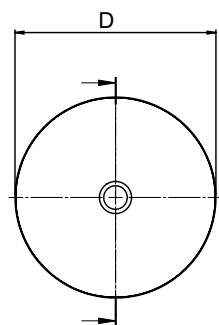


| D | L | D1 | L1 | D2 | L2 | Max Compressive Load (kg) | Deflection @ Max Compressive Load (mm) | Max Shear Load (kg) | Deflection @ Max Shear Load (mm) |  (g) | WDS No. |
|----|----|-----|----|-----|----|---------------------------------|--|------------------------|--|---|------------|
| 10 | 15 | M4 | 4 | M4 | 4 | 5.8 | 1.3 | 2.8 | 2.8 | 3 | 712-101555 |
| 15 | 15 | M4 | 4 | M4 | 4 | 12.1 | 1.8 | 5.4 | 3.6 | 10 | 712-151555 |
| 20 | 20 | M6 | 6 | M6 | 6 | 20.4 | 2.4 | 8.2 | 4.8 | 15 | 712-202055 |
| 20 | 25 | M6 | 6 | M6 | 6 | 25.5 | 2.4 | 8.1 | 6.3 | 17 | 712-202555 |
| 25 | 21 | M6 | 6 | M6 | 6 | 37.3 | 2.4 | 15.1 | 4.8 | 30 | 712-252055 |
| 25 | 25 | M6 | 6 | M6 | 6 | 32.6 | 3.2 | 14.2 | 6.3 | 30 | 712-252555 |
| 25 | 30 | M6 | 6 | M6 | 6 | 27.8 | 3.9 | 13.2 | 7.8 | 30 | 712-253055 |
| 30 | 20 | M8 | 8 | M8 | 8 | 62.5 | 2.4 | 24.4 | 4.8 | 60 | 712-302055 |
| 30 | 30 | M8 | 8 | M8 | 8 | 47.1 | 3.9 | 21.4 | 7.8 | 60 | 712-303055 |
| 30 | 40 | M8 | 8 | M8 | 8 | 40.5 | 3.9 | 19.5 | 7.8 | 50 | 712-304055 |
| 40 | 30 | M8 | 8 | M8 | 8 | 83.4 | 3.9 | 38.5 | 7.8 | 90 | 712-403055 |
| 40 | 40 | M8 | 8 | M8 | 8 | 78.9 | 5.4 | 36.8 | 10.8 | 105 | 712-404055 |
| 50 | 40 | M10 | 12 | M10 | 12 | 118 | 2.4 | 51 | 4.8 | 145 | 712-504055 |
| 50 | 50 | M10 | 12 | M10 | 12 | 124 | 6.9 | 54.2 | 10.8 | 215 | 712-505055 |
| 60 | 40 | M10 | 12 | M10 | 12 | 176 | 5.4 | 54.2 | 10.8 | 255 | 712-604055 |
| 75 | 50 | M12 | 15 | M12 | 15 | 358 | 6.5 | 128.1 | 13.2 | 445 | 712-755055 |

(((Good Vibrations)))

Medium Duty Anti-Vibration Mounts - Great Choice at Great Prices






WDS 713

Male Cylindrical Rubber Stop

MATERIAL -
 Thread & Plate Material: BZP
 Steel
 Shock Absorbing Rubber: Natural
 Rubber, Black
 Hardness: 55 Shore A

ZP

Temperature Range
 -30°C to + 80°C

| D | L | D1 | L1 | Max Compressive Load (kg) | Deflection @ Max Compressive Load (mm) |  (g) | WDS No. |
|----|----|-----|----|---------------------------------|--|---|------------|
| 8 | 8 | M3 | 8 | 3.8 | 0.9 | 5 | 713-080855 |
| 10 | 10 | M4 | 8 | 4.9 | 1.1 | 2 | 713-101055 |
| 10 | 15 | M4 | 8 | 5.1 | 1.2 | 2 | 713-101555 |
| 13 | 13 | M4 | 8 | 4.5 | 1.3 | 5 | 713-131355 |
| 15 | 8 | M4 | 8 | 7.8 | 1.5 | 4 | 713-150855 |
| 15 | 10 | M4 | 8 | 9.2 | 1.6 | 4 | 713-151055 |
| 15 | 16 | M4 | 8 | 11 | 1.8 | 5 | 713-151555 |
| 20 | 8 | M6 | 18 | 14.9 | 0.8 | 8 | 713-200855 |
| 20 | 10 | M6 | 18 | 24.2 | 1.4 | 9 | 713-201055 |
| 20 | 15 | M6 | 18 | 22.5 | 1.7 | 10 | 713-201555 |
| 20 | 20 | M6 | 18 | 20.4 | 2.4 | 10 | 713-202055 |
| 20 | 25 | M6 | 18 | 18.6 | 3.2 | 15 | 713-202555 |
| 25 | 15 | M6 | 18 | 38.1 | 1.7 | 17 | 713-251555 |
| 25 | 20 | M6 | 18 | 33.9 | 2.4 | 20 | 713-252055 |
| 25 | 25 | M6 | 18 | 31 | 3.2 | 25 | 713-252555 |
| 25 | 30 | M6 | 18 | 27.8 | 3.9 | 26 | 713-253055 |
| 30 | 15 | M8 | 23 | 82.6 | 1.7 | 33 | 713-301555 |
| 30 | 20 | M8 | 23 | 50 | 2.4 | 35 | 713-302055 |
| 30 | 25 | M8 | 23 | 43.7 | 3.2 | 39 | 713-302555 |
| 30 | 30 | M8 | 23 | 42.8 | 3.9 | 40 | 713-303055 |
| 30 | 40 | M8 | 23 | 41.2 | 3.9 | 48 | 713-304055 |
| 40 | 20 | M8 | 23 | 77 | 3.9 | 59 | 713-402055 |
| 40 | 30 | M8 | 23 | 76.0 | 3.9 | 70 | 713-403055 |
| 40 | 40 | M8 | 23 | 75.2 | 5.4 | 90 | 713-404055 |
| 50 | 20 | M10 | 28 | 240 | 2.3 | 85 | 713-502055 |
| 50 | 40 | M10 | 23 | 141 | 5.4 | 137 | 713-504055 |
| 50 | 50 | M10 | 28 | 124 | 6.9 | 175 | 713-505055 |
| 60 | 40 | M10 | 28 | 176 | 5.4 | 205 | 713-604055 |
| 75 | 50 | M12 | 37 | 341 | 6.5 | 415 | 713-755055 |

WDS 714

Female Cylindrical Rubber Stop

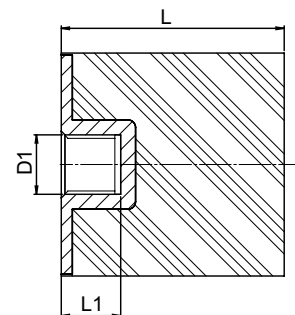
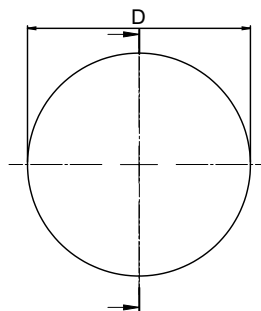
MATERIAL -


Thread & Plate Material: BZP Steel

Shock Absorbing Rubber: Natural Rubber, Black

Hardness: 55 Shore A

ZP

Temperature Range
-30°C to + 80°C

| D | L | D1 | L1 | Max Compressive Load (kg) | Deflection @ Max Compressive Load (mm) |  (g) | WDS No. |
|----|----|-----|----|---------------------------|--|---|------------|
| 8 | 8 | M3 | 4 | 3.6 | 1.5 | 2 | 714-080855 |
| 15 | 15 | M4 | 4 | 4.7 | 1.8 | 5 | 714-151555 |
| 15 | 20 | M4 | 6 | 5.5 | 1.8 | 7 | 714-152055 |
| 20 | 15 | M6 | 6 | 22.1 | 1.7 | 12 | 714-201555 |
| 20 | 20 | M6 | 6 | 20.4 | 2.4 | 15 | 714-202055 |
| 20 | 25 | M6 | 6 | 18.6 | 3.2 | 15 | 714-202555 |
| 25 | 15 | M6 | 6 | 38.1 | 1.7 | 17 | 714-251555 |
| 25 | 25 | M6 | 6 | 32.6 | 3.2 | 25 | 714-252555 |
| 30 | 15 | M8 | 8 | 82.6 | 1.7 | 28 | 714-301555 |
| 30 | 25 | M8 | 8 | 43.7 | 2.5 | 30 | 714-302555 |
| 30 | 30 | M8 | 8 | 42.8 | 3.9 | 45 | 714-303055 |
| 40 | 20 | M8 | 8 | 79 | 3.2 | 52 | 714-402055 |
| 40 | 25 | M8 | 8 | 77 | 3.5 | 58 | 714-402555 |
| 40 | 30 | M8 | 8 | 74.9 | 3.9 | 62 | 714-403055 |
| 40 | 40 | M8 | 8 | 73 | 5.4 | 79 | 714-404055 |
| 50 | 20 | M10 | 10 | 240 | 2.4 | 79 | 714-502055 |
| 50 | 50 | M10 | 10 | 119.5 | 6.9 | 146 | 714-505055 |
| 60 | 40 | M10 | 10 | 128.5 | 6.8 | 209 | 714-604055 |
| 75 | 50 | M12 | 12 | 334 | 6.6 | 340 | 714-755055 |

WDS 715

Male Conical Rubber Stop

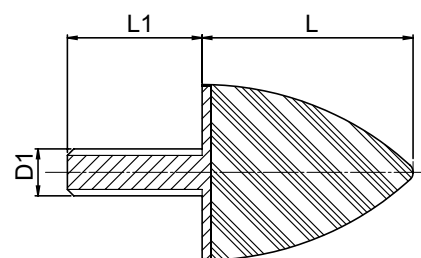
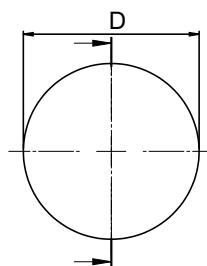
MATERIAL -


Thread & Plate Material: BZP Steel

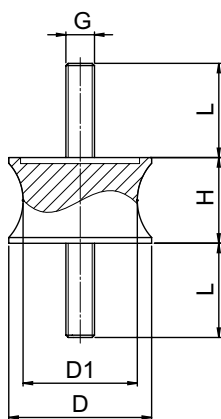
Shock Absorbing Rubber: Natural Rubber, Black

Hardness: 55 Shore A

ZP

Temperature Range
-30°C to + 80°C

| D | L | D1 | L1 | Max Compressive Load (kg) | Deflection @ Max Compressive Load (mm) |  (g) | WDS No. |
|----|----|-----|----|---------------------------|--|---|------------|
| 20 | 24 | M6 | 18 | 24.2 | 9.5 | 15 | 715-202455 |
| 30 | 36 | M8 | 23 | 57.1 | 15.4 | 35 | 715-303655 |
| 50 | 58 | M10 | 28 | 178.0 | 25.0 | 127 | 715-505855 |
| 75 | 89 | M12 | 37 | 448.0 | 37.5 | 341 | 715-758955 |




WDS 716

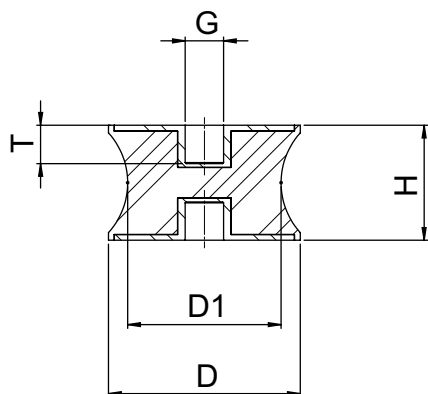
Rubber Buffer Mounts - Male Threaded

MATERIAL -
Steel -Zinc plated
Rubber - Shore hardness 57



Temperature Range
-30°C to + 80°C

| D | D1 | G | H | L |  (g) | WDS No. |
|----|----|-----|----|----|---|------------|
| 10 | 8 | M4 | 10 | 13 | 3 | 716-101057 |
| 15 | 12 | M4 | 15 | 13 | 7 | 716-151557 |
| 20 | 14 | M6 | 15 | 18 | 17 | 716-201557 |
| 30 | 22 | M8 | 20 | 23 | 55 | 716-302057 |
| 40 | 33 | M8 | 30 | 23 | 81 | 716-403057 |
| 40 | 20 | M8 | 48 | 23 | 87 | 716-404857 |
| 50 | 40 | M10 | 30 | 33 | 170 | 716-503057 |
| 75 | 50 | M12 | 40 | 37 | 350 | 716-754057 |




WDS 717

Rubber Buffer Mounts - Female Threaded

MATERIAL -
Steel -Zinc plated
Rubber - Shore hardness 57



Temperature Range
-30°C to + 80°C

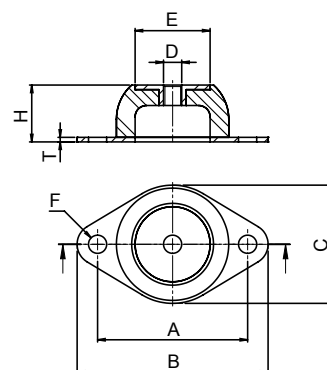
| D | D1 | G | H | T |  (g) | WDS No. |
|----|----|-----|----|----|---|------------|
| 15 | 12 | M4 | 15 | 4 | 6 | 717-151557 |
| 20 | 14 | M6 | 15 | 6 | 13 | 717-201557 |
| 30 | 22 | M8 | 20 | 8 | 35 | 717-302057 |
| 40 | 33 | M8 | 30 | 8 | 74 | 717-403057 |
| 40 | 20 | M8 | 48 | 8 | 73 | 717-404857 |
| 50 | 40 | M10 | 30 | 10 | 117 | 717-503057 |
| 75 | 50 | M12 | 40 | 12 | 298 | 717-754057 |

WDS 718


Flanged Bolt Down Anti Vibration Mount

MATERIAL -
Mild Steel
Black Natural Rubber

Ideal for light machines at low or medium vibration
Suitable for outdoor use



Related Products: Caphead Screws

| A | B | C | D | E | F | H | T | SHORE | MAX LOAD (kg) | Static Deflection |  (g) | WDS No. |
|----|-----|----|-----|----|----|----|---|-------|---------------|-------------------|---|-----------|
| 50 | 63 | 43 | M6 | 18 | 7 | 20 | 2 | 40 | 3.5 | 2.5 | 41 | 718-20540 |
| 66 | 84 | 52 | M8 | 33 | 8 | 25 | 2 | 40 | 20 | 4.6 | 82 | 718-21040 |
| 92 | 112 | 75 | M10 | 45 | 10 | 35 | 2 | 40 | 40 | 6.4 | 195 | 718-21540 |

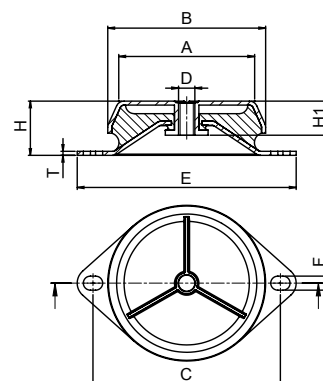
WDS 719

Mild Steel Zinc Plated Anti Vibration Mounts


MATERIAL -
Mild Steel Zinc Plated
Black Natural Rubber

ZP

Ideal for heavy vibration on rotating machinery
Suitable for outdoor use
Captive metal parts ideal for use in transit mounting with inbuilt fail safe protection



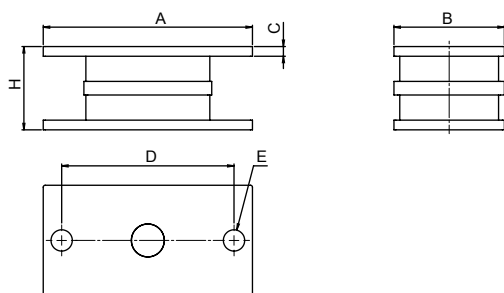
Related Products: Caphead Screws

| D | A | B | C | E | F | H | H1 | Shore | Max Load (kg) | Static Deflection (mm) |  (g) | WDS No. |
|-----|----|-----|---------|-----|----|------|----|-------|---------------|------------------------|---|-----------|
| M10 | 46 | 64 | 88 | 108 | 9 | 35.5 | 25 | 60 | 60 | 3.6 | 250 | 719-20560 |
| M12 | 64 | 84 | 110 | 133 | 11 | 35.5 | 20 | 60 | 180 | 3.9 | 386 | 719-21560 |
| M16 | 85 | 110 | 136-146 | 172 | 14 | 42 | 34 | 60 | 400 | 5.6 | 921 | 719-22060 |


WDS 720

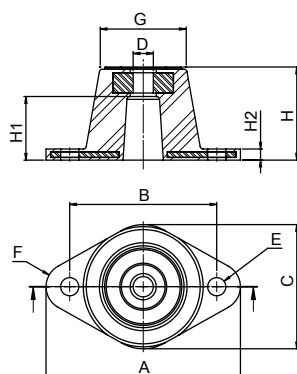
Sandwich Bolt Down Anti Vibration Mount

MATERIAL -
Galvanised plates with Vulcanized Natural Rubber



Related Products: Caphead Screws

| A | B | C | D | E | H | Shore | Deflection | Pressure (kg) | Shear | Spring Constant |  (g) | WDS No. |
|-----|----|---|-----|----|----|-------|------------|---------------|-------|-----------------|---|-----------|
| 127 | 57 | 5 | 108 | 11 | 43 | 65 | 4.5 | 830 | 175 | 12.5 | 749 | 720-21065 |
| 168 | 57 | 5 | 146 | 11 | 43 | 65 | 4.5 | 1800 | 290 | 20.5 | 1056 | 720-21565 |




WDS 721

Anti Vibration Turret Mount

MATERIAL -
Mild Steel
Black Natural Rubber

ML = Max Load (kg)
MD = Max Deflection (mm)

Related Products: Caphead Screws

| A | B | C | D | E | F | G | H | H1 | H2 | H1 | SHORE | ML | MD |  (g) | WDS No. |
|----|----|------|-----|---|------|------|------|----|-----|----|-------|-----|----|---|-----------|
| 81 | 57 | 45.8 | M8 | 9 | 10 | 29 | 33.5 | 20 | 5.5 | 20 | 45 | 35 | 8 | 81 | 721-20845 |
| 81 | 57 | 45.8 | M8 | 9 | 10 | 29 | 33.5 | 20 | 5.5 | 20 | 55 | 65 | 8 | 81 | 721-20855 |
| 81 | 57 | 45.8 | M8 | 9 | 10 | 29 | 33.5 | 20 | 5.5 | 20 | 70 | 100 | 8 | 81 | 721-20870 |
| 96 | 71 | 61.5 | M10 | 9 | 11.5 | 42.7 | 46.3 | 32 | 5.5 | 32 | 45 | 130 | 10 | 189 | 721-21045 |
| 96 | 71 | 61.5 | M10 | 9 | 11.5 | 42.7 | 46.3 | 32 | 5.5 | 32 | 55 | 225 | 10 | 189 | 721-21055 |
| 96 | 71 | 61.5 | M10 | 9 | 11.5 | 42.7 | 46.3 | 32 | 5.5 | 32 | 70 | 350 | 10 | 189 | 721-21070 |

WDS 693

Anti-vibration Levelling Foot - Medium Duty

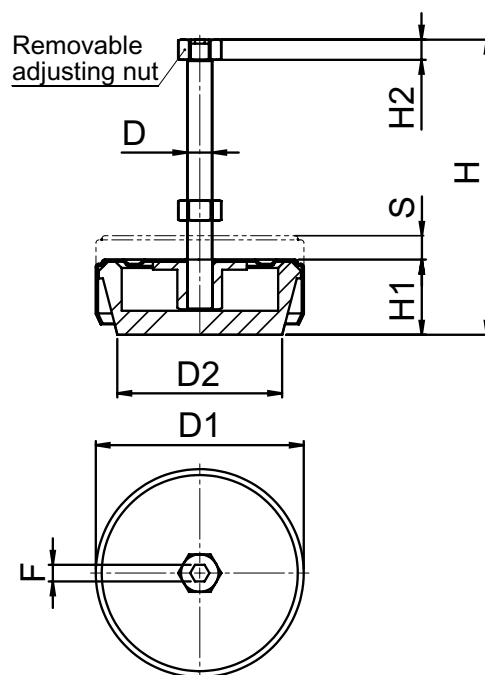
MATERIAL -


Body: Melamine Coating
Screw: Steel Zinc Plated
(Steel Grade 1.0040)

ZP



Anti-vibration Base



| D | D1 | D2 | H | H1 | H2 | F | S | Max Load (Kg) |  (g) | WDS No. |
|-----|-----|-----|-----|----|-----|----|----|---------------|---|-----------|
| M12 | 100 | 78 | 207 | 35 | 7.5 | 8 | 22 | 280 | 710 | 693-12100 |
| M16 | 140 | 114 | 221 | 42 | 8.5 | 10 | 24 | 1200 | 1695 | 693-16140 |
| M20 | 190 | 158 | 228 | 54 | 8.5 | 12 | 27 | 3000 | 3585 | 693-20190 |

WDS 694

Anti-vibration Levelling Foot - Heavy Duty

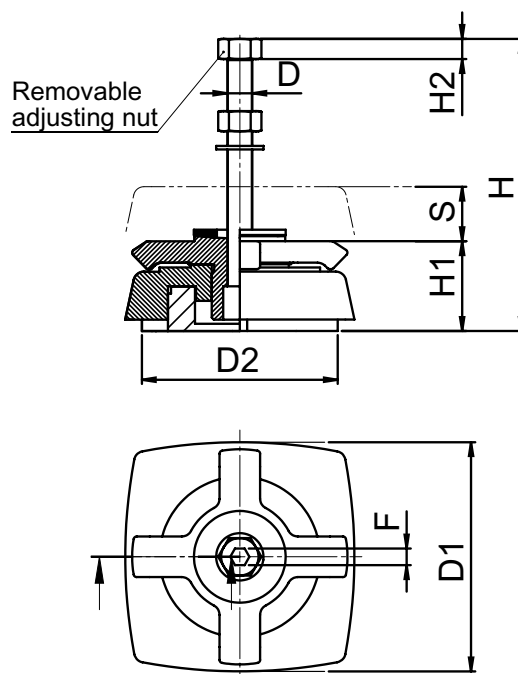
MATERIAL -


Body: Melamine Coating
Screw: Steel Zinc Plated
(Steel Grade 1.0040)

ZP



Anti-vibration Base



| D | D1 | D2 | H | H1 | H2 | F | S | Max Load (Kg) |  (g) | WDS No. |
|-----|-----|-----|-----|----|-----|----|----|---------------|---|-----------|
| M12 | 110 | 97 | 231 | 47 | 7.5 | 8 | 15 | 600 | 1730 | 694-12110 |
| M16 | 130 | 117 | 231 | 51 | 8.5 | 10 | 20 | 1500 | 2730 | 694-16130 |
| M16 | 160 | 146 | 241 | 65 | 8.5 | 10 | 24 | 1800 | 4540 | 694-16160 |
| M20 | 200 | 185 | 267 | 69 | 8.5 | 12 | 27 | 4000 | 7720 | 694-20200 |